

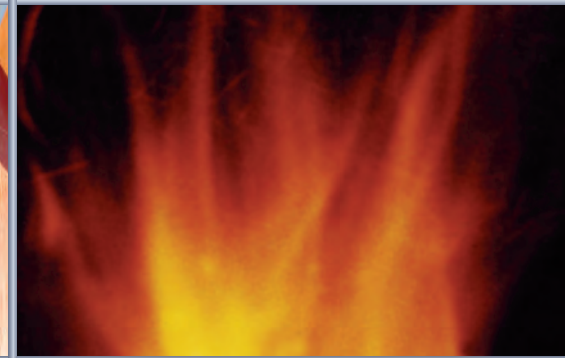
CARBON DIOXIDE  
FIRE SUPPRESSION  
SYSTEM

FIKE CO<sub>2</sub> -

RELIABLE

FAST

EFFECTIVE





## Total Flooding and Local Application Systems

Both CO<sub>2</sub> systems consist of a fixed supply of carbon dioxide connected to a piping network for agent distribution. A total flooding system quickly extinguishes both surface and deep seated fire hazards by discharging the agent into an enclosed volume. A local application system is used when the hazard is non-enclosable. Local application systems protect a two- or three-dimensional hazard by discharging the carbon dioxide directly on the burning material.

## How Does Carbon Dioxide Work?

Fike Carbon Dioxide systems use intelligent, reliable, and fast acting controls to quickly sense a fire before it can cause costly damage to your property. Carbon dioxide gas has a high rate of expansion which allows it to work fast. When applied to a fire, CO<sub>2</sub> provides a heavy blanket of gas that reduces the oxygen level to a point where combustion cannot occur. Since carbon dioxide is a gas, there is no clean-up associated with a system discharge — which means minimal business interruption.



## Applications for CO<sub>2</sub>

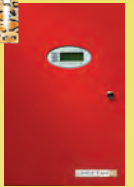
- Flammable liquid storage areas
- Quench tanks
- Mixing operations
- Spray booths
- Turbine driven generators
- Electrical areas
- Dust collectors
- Engine rooms



## UL/FM FIRE SUPPRESSION CONTROLS THAT FIT YOUR NEEDS

**CHEETAH Xi**

Fike's intelligent Cheetah Xi® system turns every device into a peer. These peers not only communicate up-to-the-second information to the control panel, they also communicate with each other.



Each device is capable of generating accurate and highly detailed information. Conventional systems give you a general idea of a fire's location — for example, the second floor of your building. Cheetah Xi's intelligent sensors tell you precisely which device is in alarm and specific information on that hazard — for example, a specific location on the second floor.

Cheetah Xi modules can be programmed or tied in to other systems such as:

- Shutdowns
- HVAC / Smoke Control
- Voice Evacuation Systems
- Dampers
- Doors
- Elevators
- Releasing of Clean Agent Suppression, Carbon Dioxide Suppression, Watermist, Foam, and Sprinkler / Pre-Action
- Security / CCTV / Building Management

In addition, Fike offers a reliable, conventional fire detection system, the SHP-PRO®... easily configured for use within a wide range of industries and fire suppression applications.

**Fike**®

## WE'RE PROUD OF OUR RESUME

**EXPERIENCED:** We've worked in the fire protection business since 1960.

**FOCUSED:** We specialize in Life Safety Products, as well as Facility and Asset Protection Products.

**VERSATILE:** We design, manufacture, distribute and maintain our products.

**GLOBAL:** We have clients, manufacturing facilities, sales outlets and maintenance companies around the world.

**INNOVATIVE:** In 1994, we became the first manufacturer to bring a UL-listed and FM-approved, clean agent fire-suppression system to market, replacing Halon.

**EARTH-FRIENDLY:** We pioneered the development of clean agent systems and we continue to explore environmentally safe alternatives such as inert gas.

**COMPREHENSIVE:** Fike has a worldwide network of experienced distributors each with a staff of factory trained technicians to meet your installation and service requirements.

# Fike®

WWW.FIKE.COM



## FIKE GLOBAL MANUFACTURING, SALES AND SERVICE

### AMERICAS

**FIKE CORPORATION**  
Blue Springs, MO  
USA  
Tel: +1-816-229-3405  
Fax: +1-816-228-9277  
Email: fpssales@fike.com

**FIKE LATINA LTDA**  
Jundiaí, Brazil  
Tel: +55-11-4525-5900  
Fax: +55-11-4525-1201  
Email: vendas@fike.com.br

### EUROPE

**FIKE PROTECTION SYSTEMS, LTD.**  
Guildford, Surrey  
United Kingdom  
Tel: +44-1-483-457584  
Fax: +44-1-483-456235  
Email: fps.int@fike.com

### ASIA

**FIKE ASIA PACIFIC SDN BHD**  
Kuala Lumpur, Malaysia  
Tel: +60-3-7859-1462  
Fax: +60-3-7859-1461  
Email: fikeap@fike.com

FIKE CO<sub>2</sub> -  
RELIABLE, FAST, EFFECTIVE

